

~ Celebrating ~  
*Platinum Fest!*

**10% NOW,\***  
**IN 2021!**

• REST ON POSSESSION! •

NO BANK LOAN REQUIRED | 0% INTEREST

PLATINUM  
**LIFE**  
ANDHERI (W)



Multi-Purpose Court



Aqua Pool with Terrace Lounge & Bar



Box Cricket

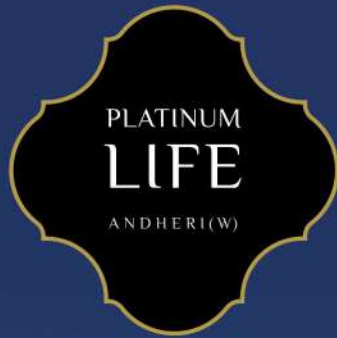
Images for Reference Only

[www.platinumlife.co.in](http://www.platinumlife.co.in)



Project is registered as Platinum Life, MahaRERA No.: P51800014518 (<https://maharera.mahaonline.gov.in>)

PRESENTING  
2 & 3 BHK RESIDENCES  
IN A FIRST-OF-ITS-KIND,  
LIFESTYLE WITH ACTIVE FITNESS



- 3 TOWERS OF 15 STOREYS EACH
- AN ARRAY OF ACTIVE FEATURES
- 20,000 SQ. FT. EXTRAVAGANT SKY-CLUB RECREATIONS WITH SKY BRIDGES
- 11,000 SQ. FT. SPRAWLING GROUND LEVEL AMENITIES
- RESIDENCES FURNISHED WITH BRANDED FITTINGS & FIXTURES



ARTIST'S IMPRESSION

# LIFESTYLE EXTRAVAGANZAS ACROSS 3 TOWERS

## ACTIVE SKY CLUB LIFE & GROUND LEVEL INDULGENCES



SKY-CLUB RECREATIONS - 20,000 SQ. FT



ARTIST'S IMPRESSION

GROUND LEVEL FEATURES - 11,000 SQ. FT.

ADD LIFE TO YOUR DAYS,  
AND YEARS TO YOUR LIFE

COME HOME TO  
AN ACTIVE WAY OF LIFE



## ACTIVE FITNESS

- GYMNASIUM WITH PERSONAL TRAINER
- AEROBICS & YOGA STUDIO
- MULTI-PURPOSE SPORTS COURT
- JOGGING TRACK & ACUPRESSURE WALKWAYS
- MEDITATION GARDEN



## ACTIVE COMMUNITY

- CELEBRATIONS HALL
- PARTY LAWN
- LOUNGES
- SENIOR CITIZENS' GYM



## ACTIVE INDULGENCES

- AZURE SWIMMING POOL
- EXTRAVAGANT SKY GYM
- ORGANIC SALAD & JUICE BAR
- UNISEX SALON
- INDOOR GAMES ARCADE



## ACTIVE PRIVILEGES

- ON-CALL BUTLER
- 24 X 7 CHAUFFEUR
- VIP GUEST LOUNGE WITH BAR
- PERSONALISED FASHION STUDIO



ARTIST'S IMPRESSION



**GET READY FOR LIFE  
WITH READY SHOW FLAT  
& SALES LOUNGE**

ACTUAL PHOTOGRAPHS





Artist's Impression

## A METICULOUSLY-PLANNED MASTER PIECE

### PROJECT LAYOUT

#### WING A

- 2BHK - 665 SQ. FT.
- 3BHK - 950 SQ. FT.

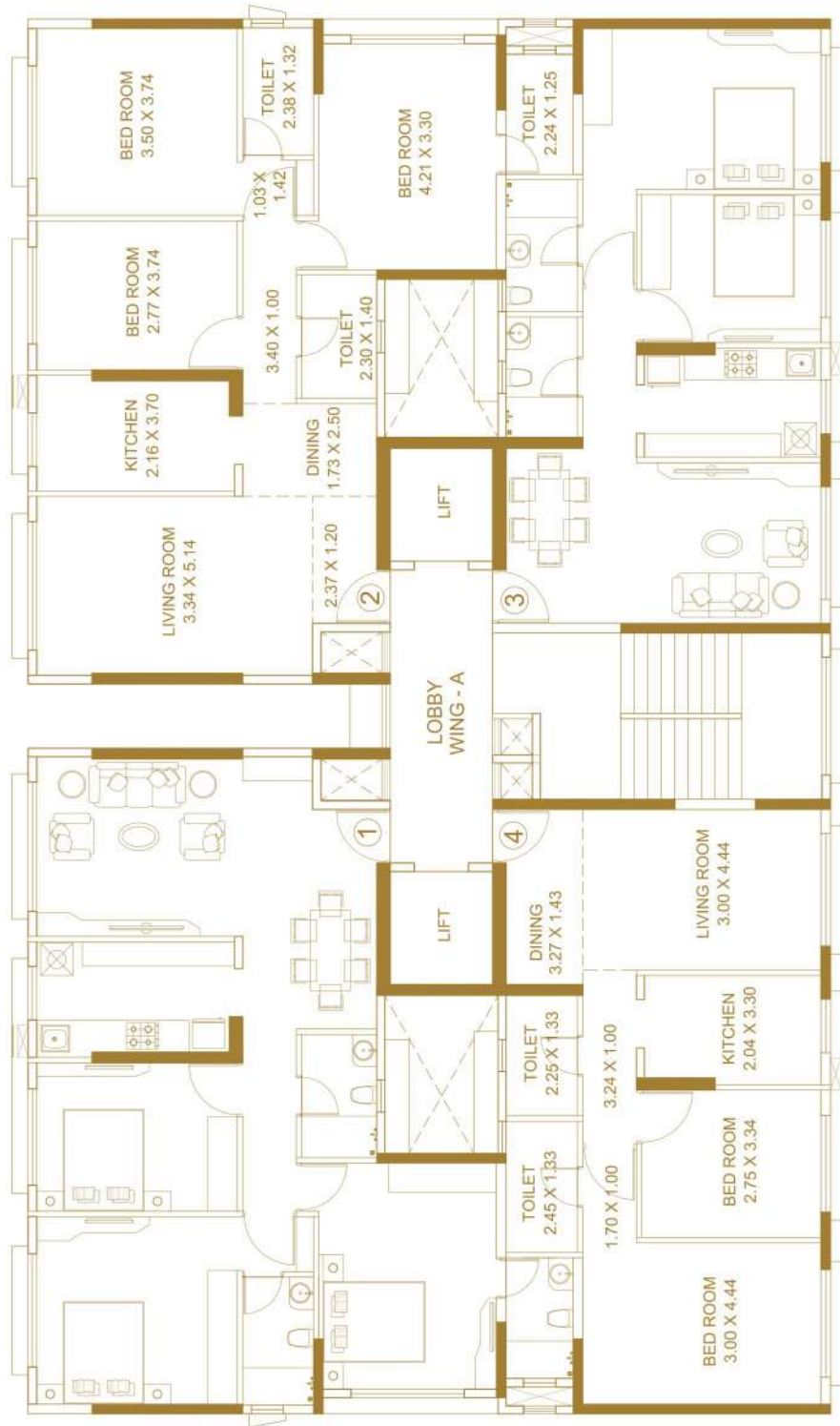
#### WING B & C

- 2BHK - 665 SQ. FT.
- 3BHK - 790 SQ. FT.
- 3BHK - 805 SQ. FT.

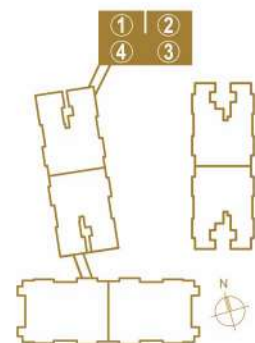
#### WING D & E

- 3BHK - 765 SQ. FT.
- 3BHK - 900 SQ. FT.

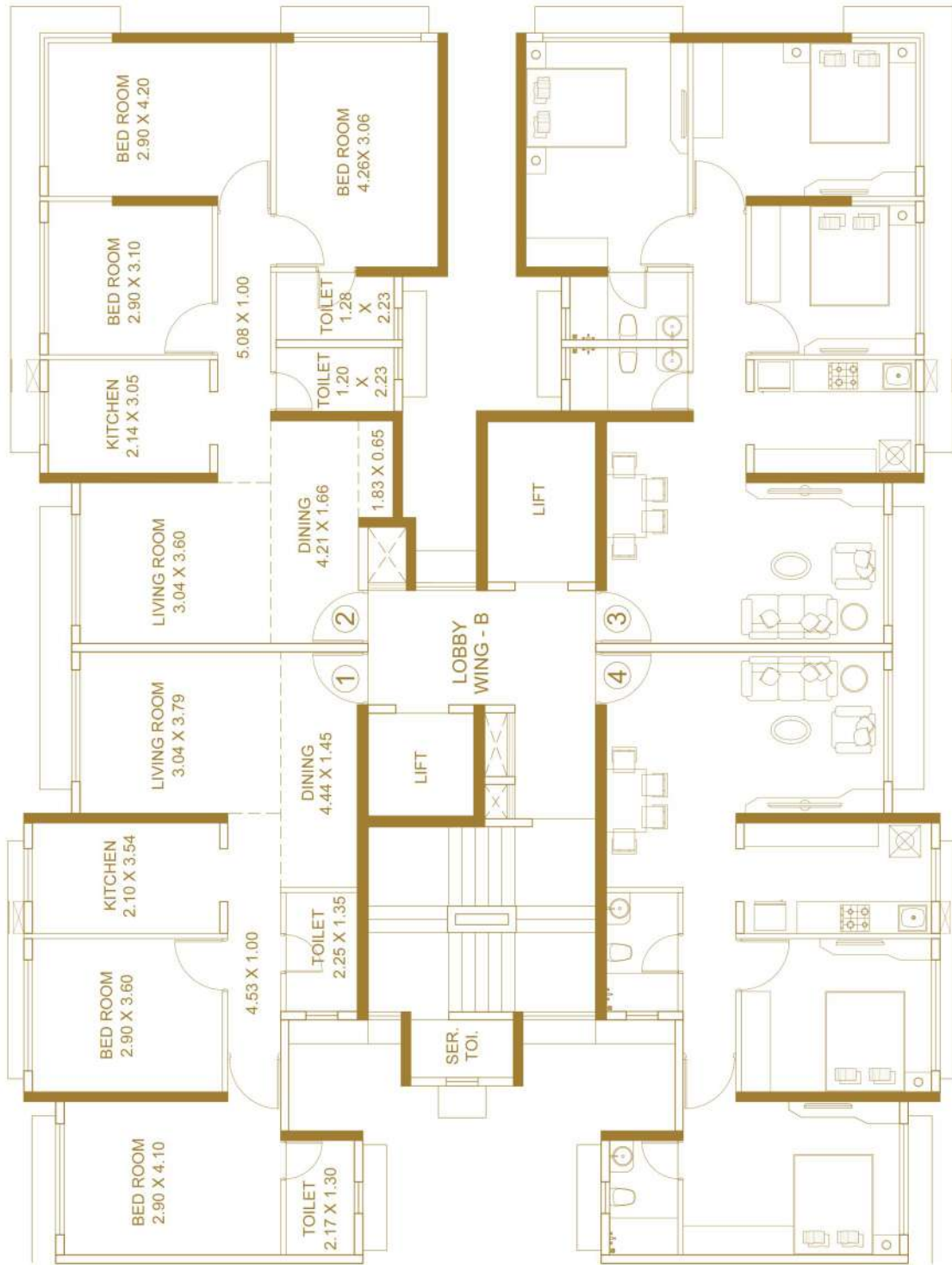
# WING A



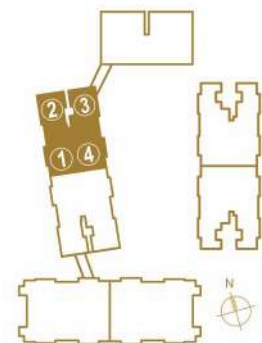
**TYPICAL FLOOR PLAN**  
4<sup>TH</sup> TO 6<sup>TH</sup>, 8<sup>TH</sup> TO 13<sup>TH</sup> & 15<sup>TH</sup> FLOOR



# WING B

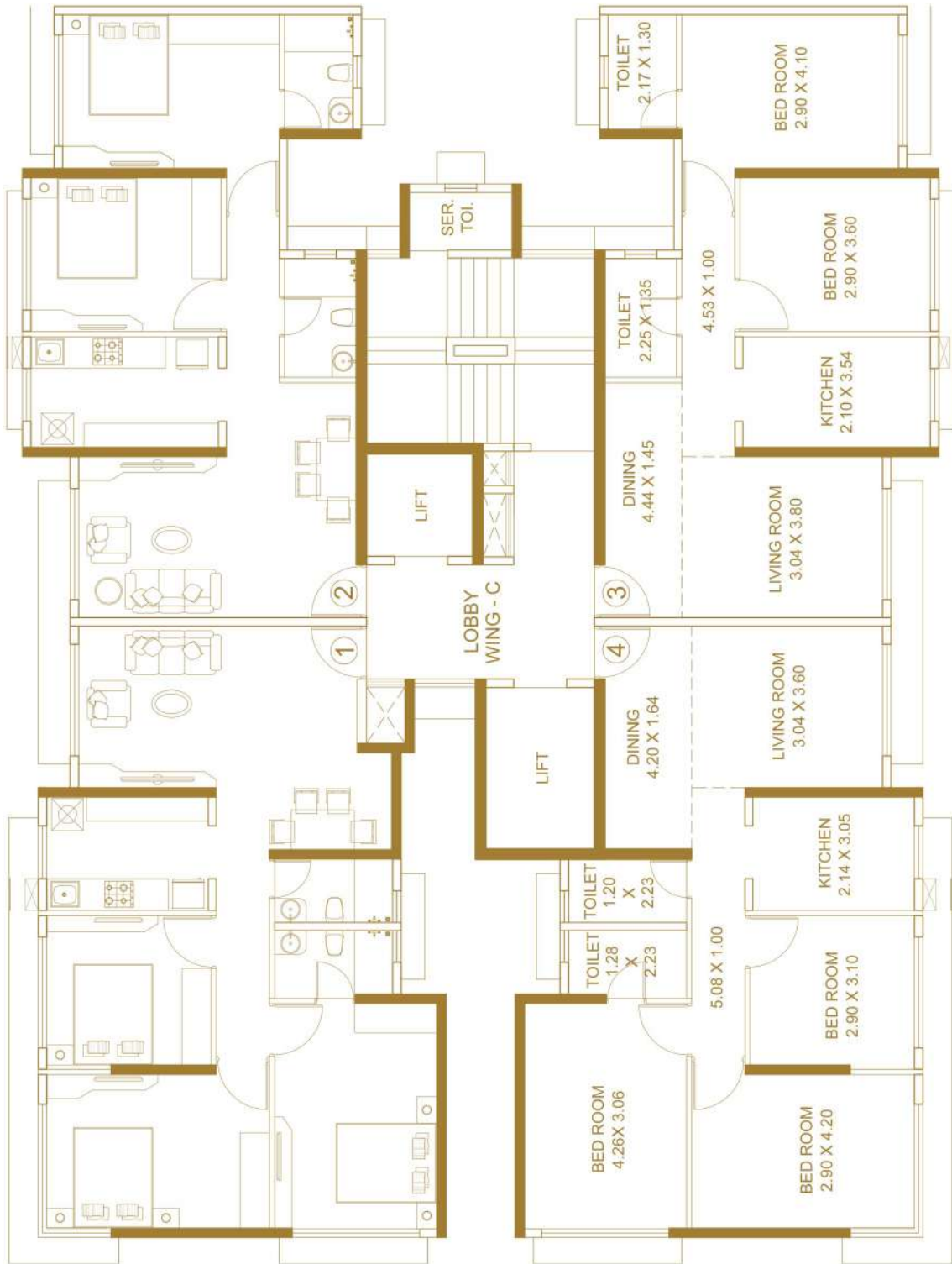


**TYPICAL FLOOR PLAN**  
 2<sup>ND</sup> TO 6<sup>TH</sup>, 8<sup>TH</sup> TO 13<sup>TH</sup> & 15<sup>TH</sup>, 16<sup>TH</sup> FLOOR

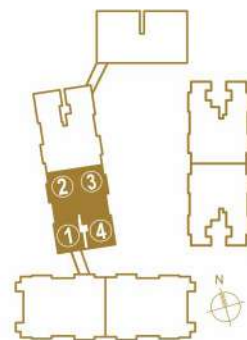




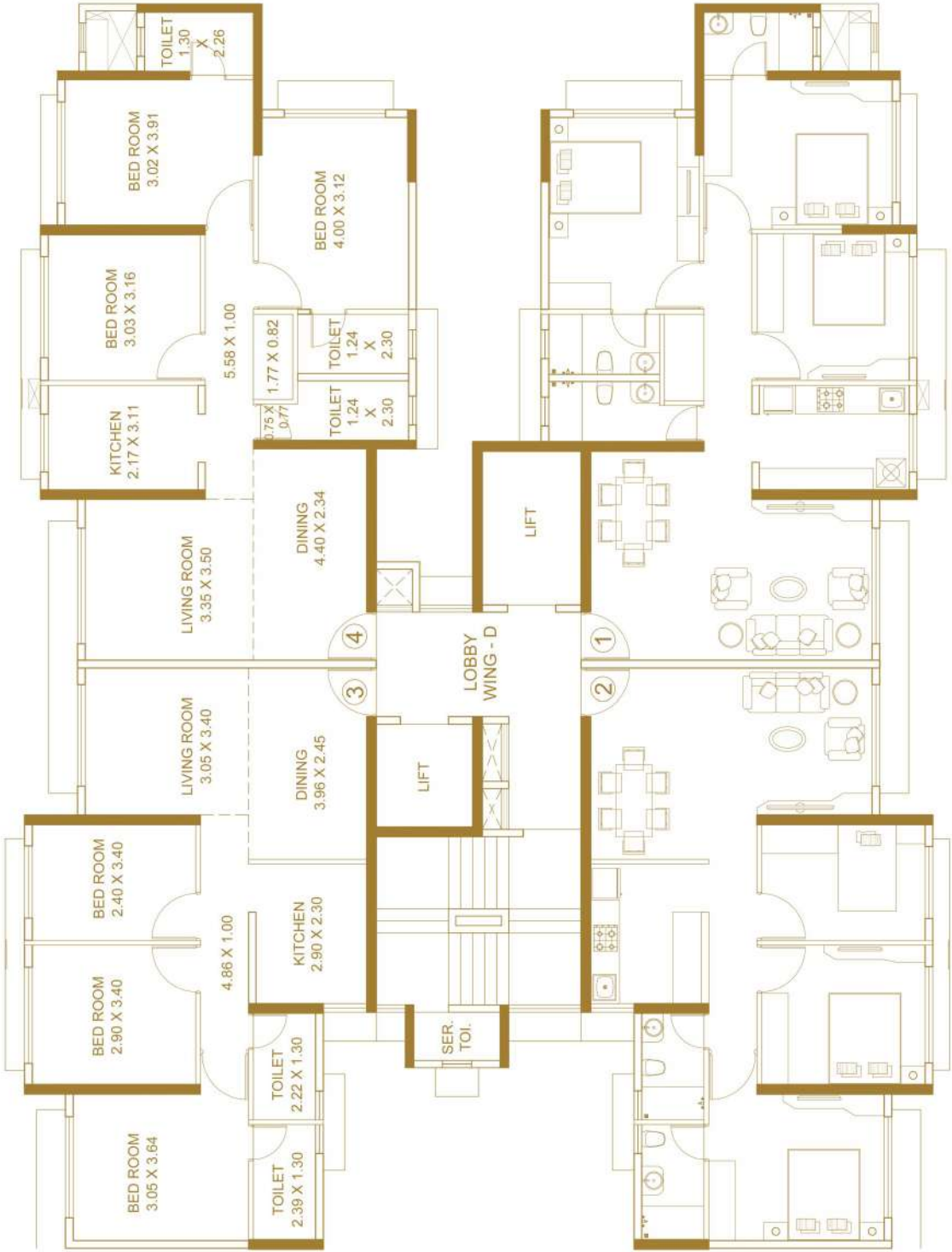
# WING C



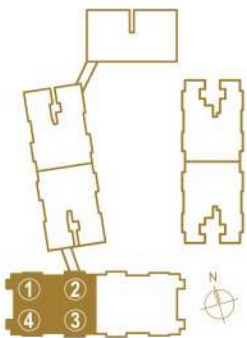
**TYPICAL FLOOR PLAN**  
 2<sup>ND</sup> TO 6<sup>TH</sup>, 8<sup>TH</sup> TO 13<sup>TH</sup> & 15<sup>TH</sup>, 16<sup>TH</sup> FLOOR



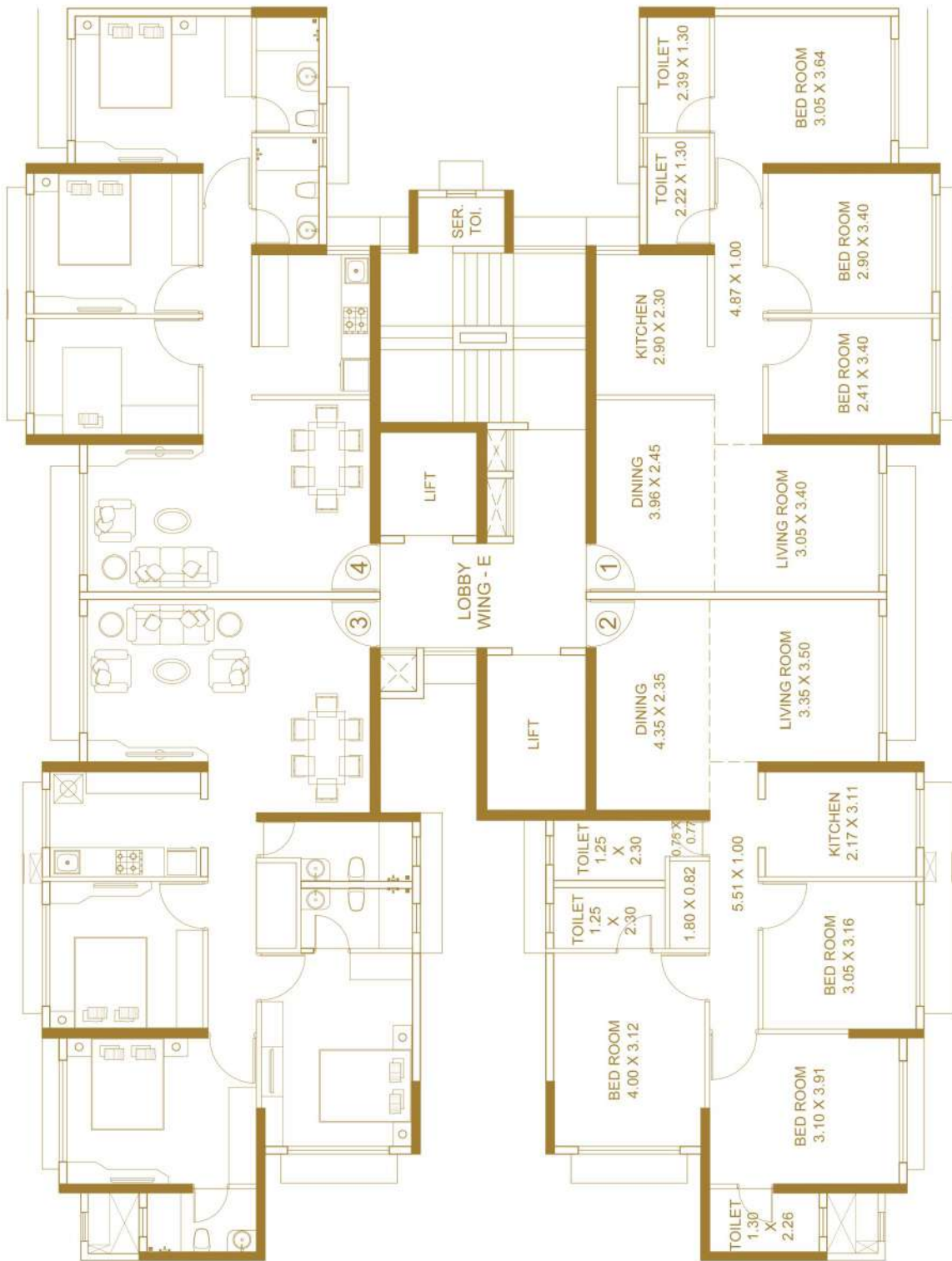
# WING D



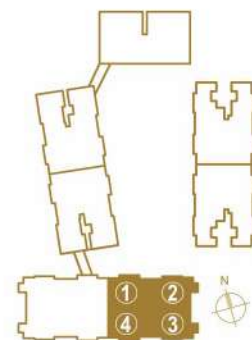
**TYPICAL FLOOR PLAN**  
3<sup>RD</sup> TO 6<sup>TH</sup>, 8<sup>TH</sup> TO 13<sup>TH</sup> & 15<sup>TH</sup> FLOOR



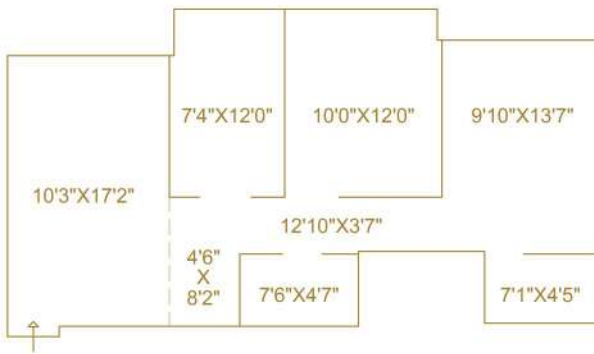
# WING E



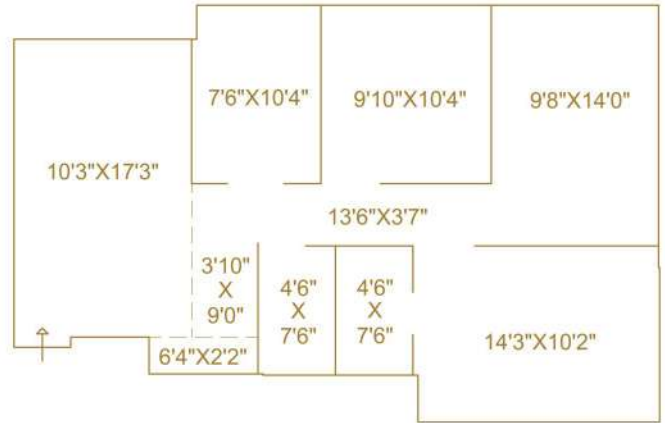
TYPICAL FLOOR PLAN  
3<sup>RD</sup> TO 6<sup>TH</sup>, 8<sup>TH</sup> TO 13<sup>TH</sup> & 15<sup>TH</sup> FLOOR



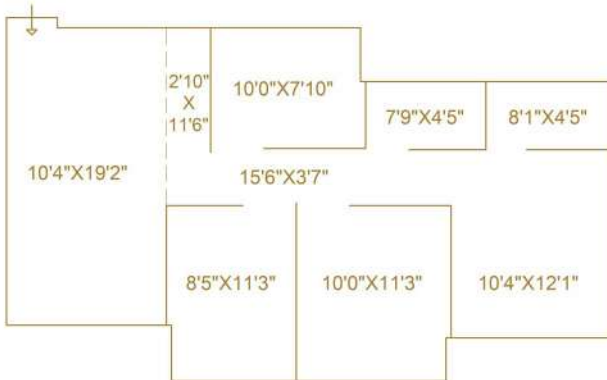
# UNIT AREA CALCULATION



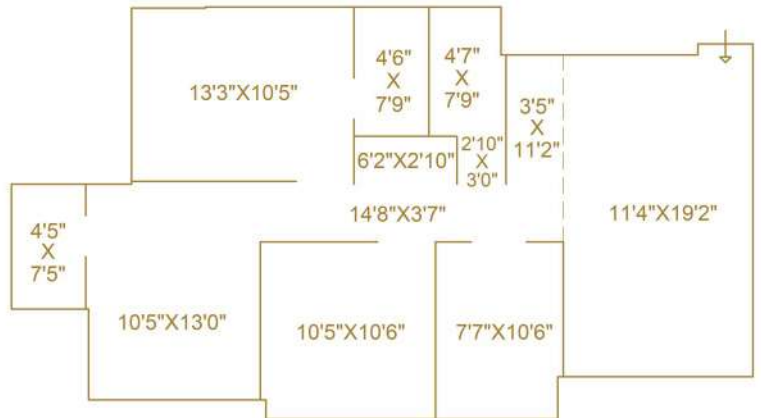
665 SQ. FT. - 2 BHK



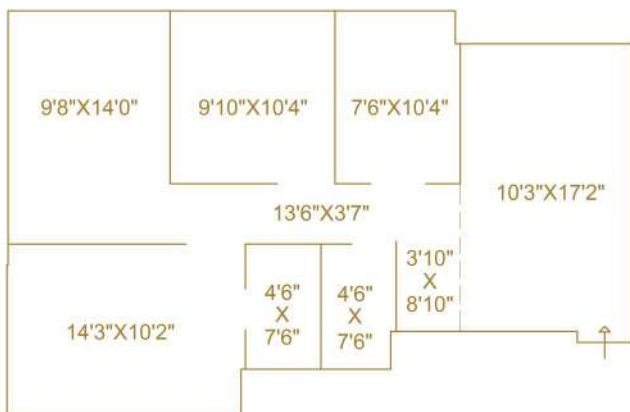
805 SQ. FT. - 3 BHK



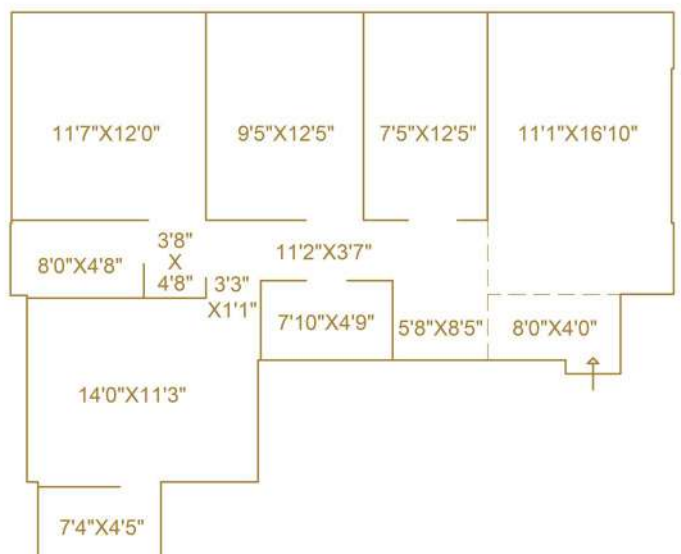
765 SQ. FT. - 3 BHK



900 SQ. FT. - 3 BHK



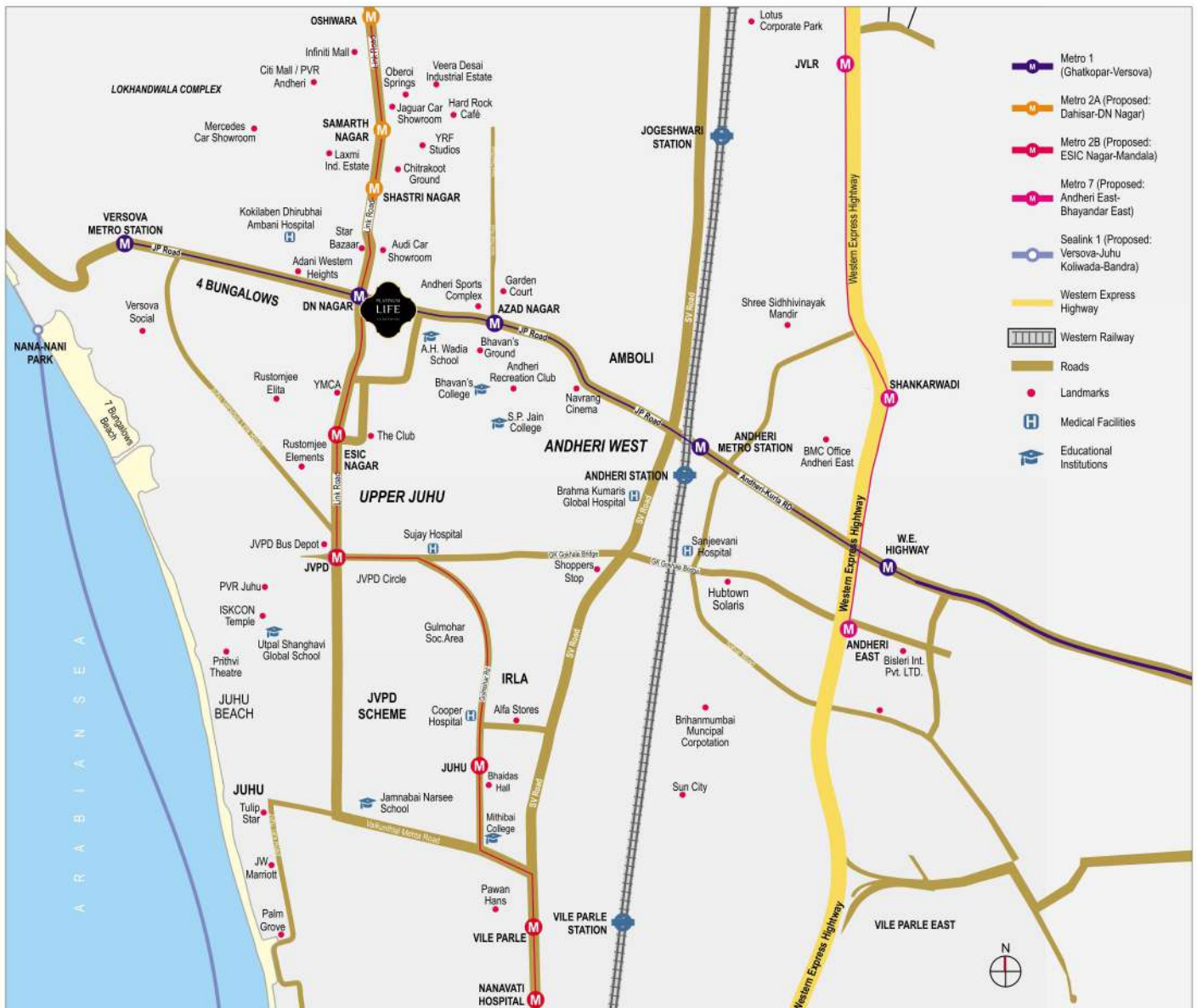
790 SQ. FT. - 3 BHK



950 SQ. FT. - 3 BHK

\*Dimensions are mentioned in Feet as an alternate mode of measurement for ease of reference and calculation.

# AN ADDRESS SURROUNDED BY ACTIVE LIFE VENUES AT ANDHERI (W)



## ACTIVE COMFORTS OF CONNECTIVITY

- D. N. NAGAR & AZAD NAGAR, METRO STATIONS - 2 MINS WALK
- OFF NEW LINK ROAD
- ANDHERI & VILE PARLE, STATIONS - 10 MINS
- INTERNATIONAL & DOMESTIC, AIRPORTS - 15 MINS
- RIGHT OPPOSITE JAIN DERASAR

## ACTIVE, STATUS-POINT LOCATION

- THE CLUB & ANDHERI SPORTS CLUB - 5 MINS
- KOKILABEN HOSPITAL - 5 MINS
- PRITHVI THEATRE & INFINITY MALL - 10 MINS
- YRF STUDIO - 10 MINS
- SURROUNDED BY LOUNGES, PUBS, FINE DINES, ET AL.



**Sales Office:** Platinum Sales Lounge, Off J. P. Road, D. N. Nagar, Andheri (W), Mumbai - 400 053

**Corporate Office:** 8<sup>th</sup> & 9<sup>th</sup> Floors, Peninsula Heights, C. D. Barfiwala Marg, Juhu Lane, Andheri (W), Mumbai - 400 058 | **Email:** sales@platinumcorp.in

**For Details, Call:** Aashi Dardi: 808080 4128 | Dimple Patel: 808080 4132 | Hiral Patel: 808080 4136



Project is registered with MAHARERA as Platinum Life, RERA No.: P51800014518 (<https://maharera.mahaonline.gov.in>)

All plans, features, images, facilities, dimensions and details are tentative and subject to approvals from authorities concerned. Commuting time, specifications, furniture, fixtures and visuals are indicative only. You are required to verify all the details, including approvals, areas, amenities, services, terms of sales, payments and other relevant terms independently with Developer's sales team / office, also by physically visiting the project site and from the authorized website of MahaRERA. The project, developed by Samudra Darshan Gruhpravesh LLP, is mortgaged to Catalyst Trusteeship Limited and ECL Finance Limited. We shall obtain and provide No Objection Certificate (NOC) / permissions from both for sale of the units in the project, if required.