



www.paradisegroup.co.in



**SAI WONDER**

Plot No. 4 & 5, Sector - 35 -F, Kharghar

A PROJECT BY PARADISE GROUP

### Location Map



Site Address: Plot No - 4,5, Sector - 35 -F, Kharghar, Navi Mumbai.

Architect: Dimensions | RCC Consultant: Structural Concepts

Interior Consultant: Vini And Associates | Landscape Architect: New Arch Design



Corp. Off.: Paradise Group;  
B 501 & 516, Persipolis, Plot No. 74,  
Sector - 17, Vashi, Navi Mumbai - 400 705.

Tel: +91-22-2766 5800 / 5900 / 0100

Fax: +91-22-2789 6800

E mail: info@paradisegroup.co.in



thoughttrains.com

All the specification, design, facilities, dimensions, etc. are subject to the approval of the respective authorities & developers and would be changed if necessary. The discretion remains with the developers. The pictures used in this promotional material are entirely the impression of an artist's imagination and must not be misconstrued as real examples.





**It's Optimizing.**  
When you expect more from life.

**It's Amazing.**  
When every day is a surprise.

**It's Mesmerizing.**  
When you live the most contented life.

Welcome to



Welcome to the 'zing of life'.





WELCOME TO A LIFE  
THAT IS ADVANCED IN  
ITS OWN RIGHT





WELCOME TO



Who says luxury can't dwell in 1 & 2 BHK residences?  
Welcome to a project that is ideal in terms of space and design.  
Live at the heart of Navi Mumbai surrounded with serene  
environs of Kharghar. The homes that are abundant with all the  
modern luxuries, await your arrival.

**PROJECT HIGHLIGHTS**

G + 18 Storied Residential Tower with 95 Flats

Thoughtfully Planned 1 & 2 BHK Residences

Located amidst the serene surroundings of Kharghar

At the central node of Navi Mumbai







# Mesmerizing

THE LOCALE THAT HAS  
PRIVILEGED INTIMACY WITH NATURE.

Kharghar is a central and third most developed node of Navi Mumbai City. Abundant with nature and blessed with heavenly hill views, Kharghar stands out with ample of open spaces, fresh air, green environs and pollution free atmosphere. The soul soothing views just add up to the beauty and make Kharghar the most revitalizing heaven to live.

#### LOCATION ADVANTAGES

#### IN CLOSE PROXIMITY TO

Central Park • Proposed International Airport • Kharghar Railway Station

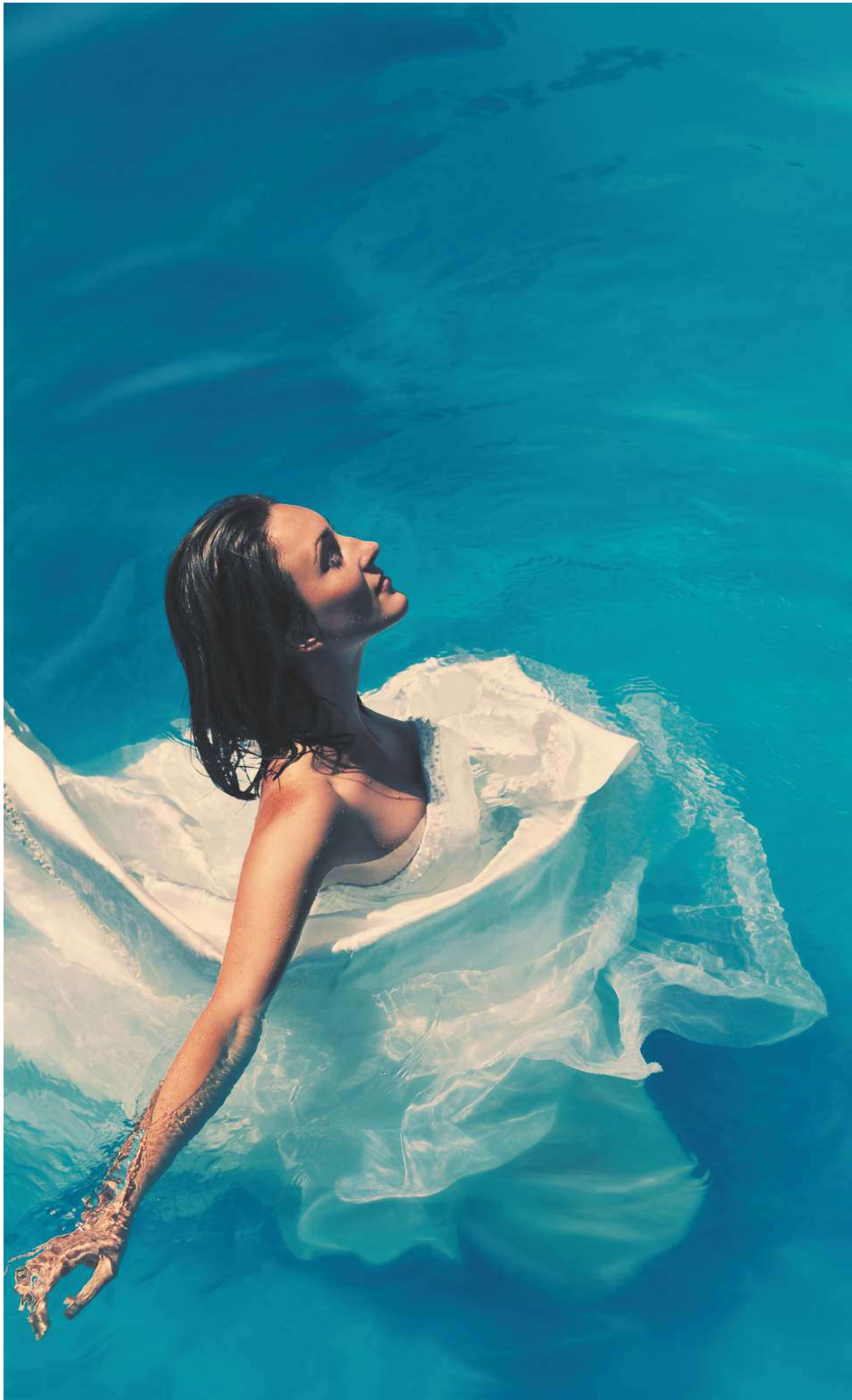
Sion-Panvel Highway • Mumbai-Pune Expressway

Mall/ Multiplexes • School / Colleges • A world-class Golf Course

ISKCON temple • Metro • Funcity







# Emphasizing

Amenities that distinguish your  
signature lifestyle.





As you dwell in spacious residences, let every inch of your home reflect the class you hold. Your living is opulent with ultra-luxurious lifestyle amenities. The highly innovative designs and striking amenities promise you an upgraded lifestyle.

#### LIFESTYLE AMENITIES

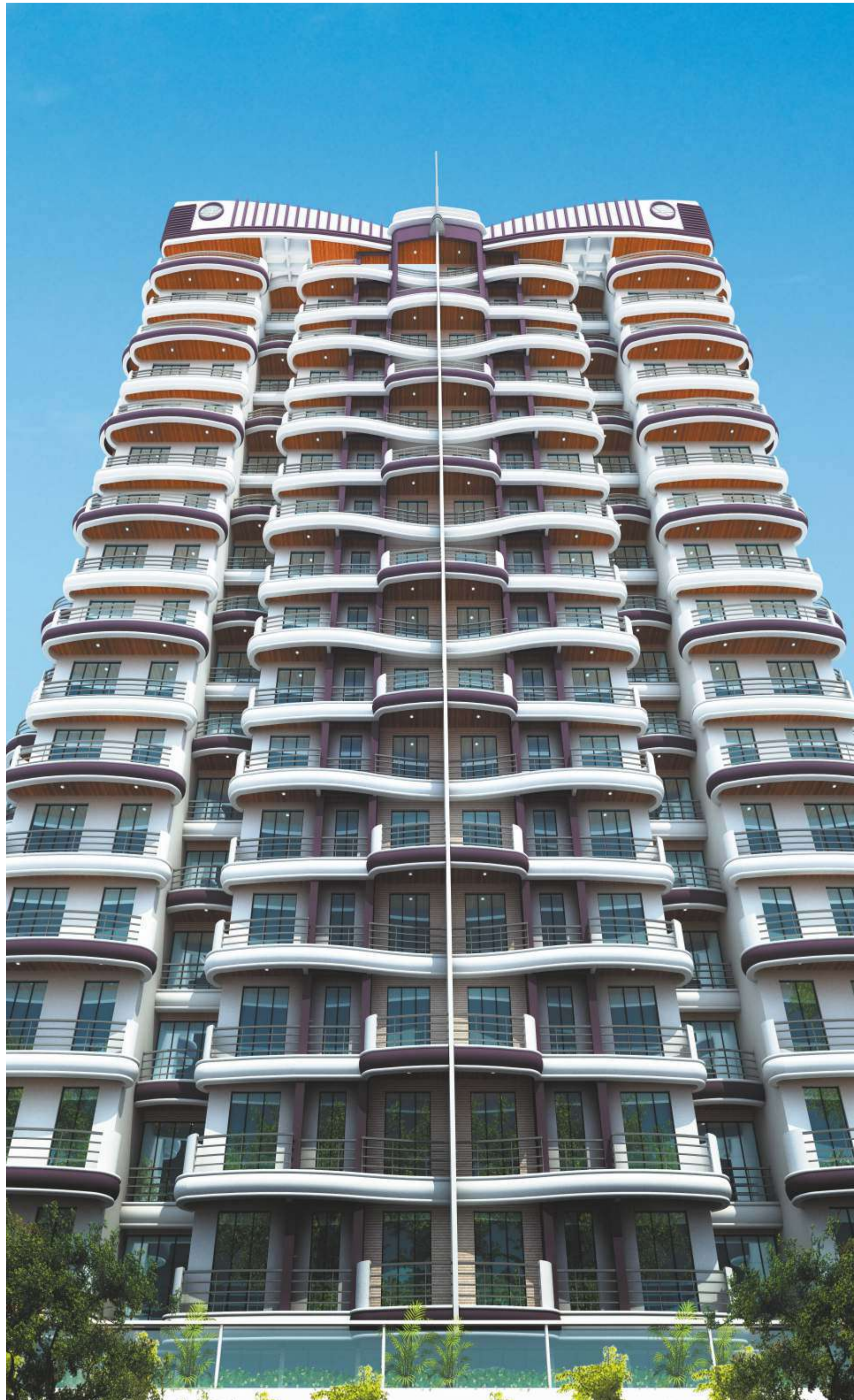
- Decorative High-ceiling Main Entrance Lobby
- Air Conditioned Lounge for guests
- Hi-tech Gymnasium
- Indoor Games such as 9 Ball Pool, Table Tennis, Air Hockey, Carrom etc.
- Well Designed Landscaped Podium Garden by Renowned Landscape Architect
- Meditation Area
- Walkway
- Children play Area
- Swimming Pool
- Steam Bath
- Society Office
- Community Lawn
- Two High-speed Branded elevators
- Power back-up for Lifts and Common Utilities

#### OTHER AMENITIES

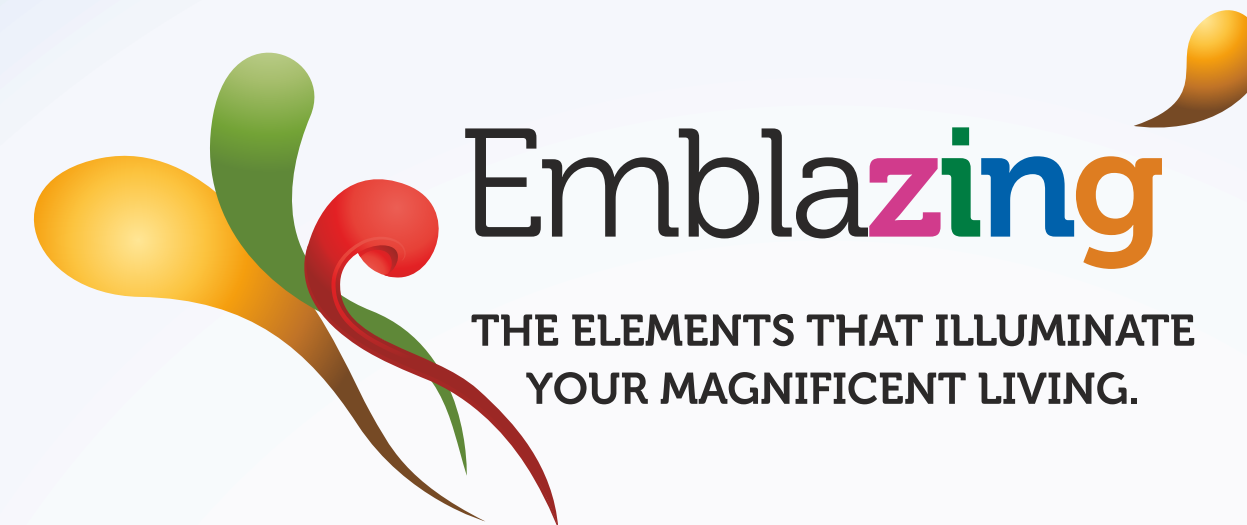
- Elegant Architecture of the Building
- Earthquake Resistant R.C.C. Structure
- Ground & First Floor Ample Parking Space
- Rain Water Harvesting System
- Acrylic Paint on External Walls
- Decorative Checkered Stone tile of Surrounding Compound Area











At Sai Wonder, your beautiful paradise is adorned with the carefully chosen elements that will illuminate your fine class living. Now every bit of your home will speak your style.

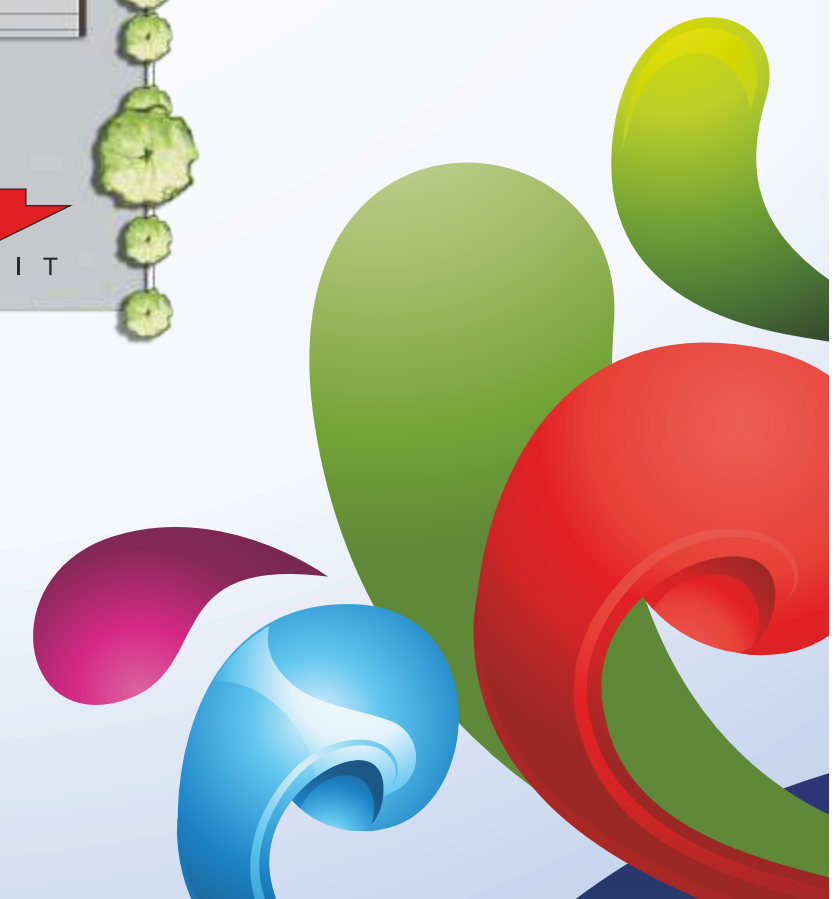
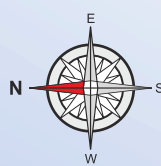
#### THE FACILITIES

- Vitrified Flooring in all rooms
- Wooden Flooring in Master Bedroom
- Granite Kitchen Platform with Parallel Service Platform
- Branded Stainless Steel Sink
- Branded 4/3 Burner Gas Hob, Exhaust Chimney
- Water Purifier in Kitchen
- Exhaust Fan in Kitchen Window
- Shower Panel in Master Toilet
- Branded Geyser in Bathroom
- Designer Bathroom with Branded Sanitary Ware
- Anodized Aluminum Sliding windows with Tinted Glass and Mosquito Net Protection
- Marble and Granite window sill with polished edges
- M.S. railing in Balcony & Terraces up to 1m Height
- Anti Skit Tiles in attached Terraces, Balcony & Service Area
- TV, Telephone & Internet Points in all rooms
- Concealed Plumbing with Premium Quality C.P. Fitting
- Branded Concealed Copper Wiring with MCB / Isolator and Electrical Fittings
- Gypsum Finished Internal Walls
- Attractive main Door with elegant handles and night latch - Designer Flush Styled Doors in Bedroom
- Premium Quality Plastic paints on interior walls & one wall Highlighted with Dark Paints or Wallpaper in Living Room and Master bedroom
- Video Door Security System in each Flat with Cameras at the entry gates





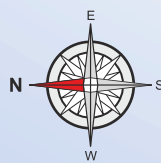
# GROUND FLOOR PLAN







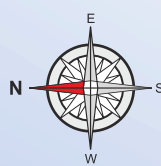
# 1ST FLOOR PLAN







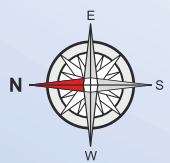
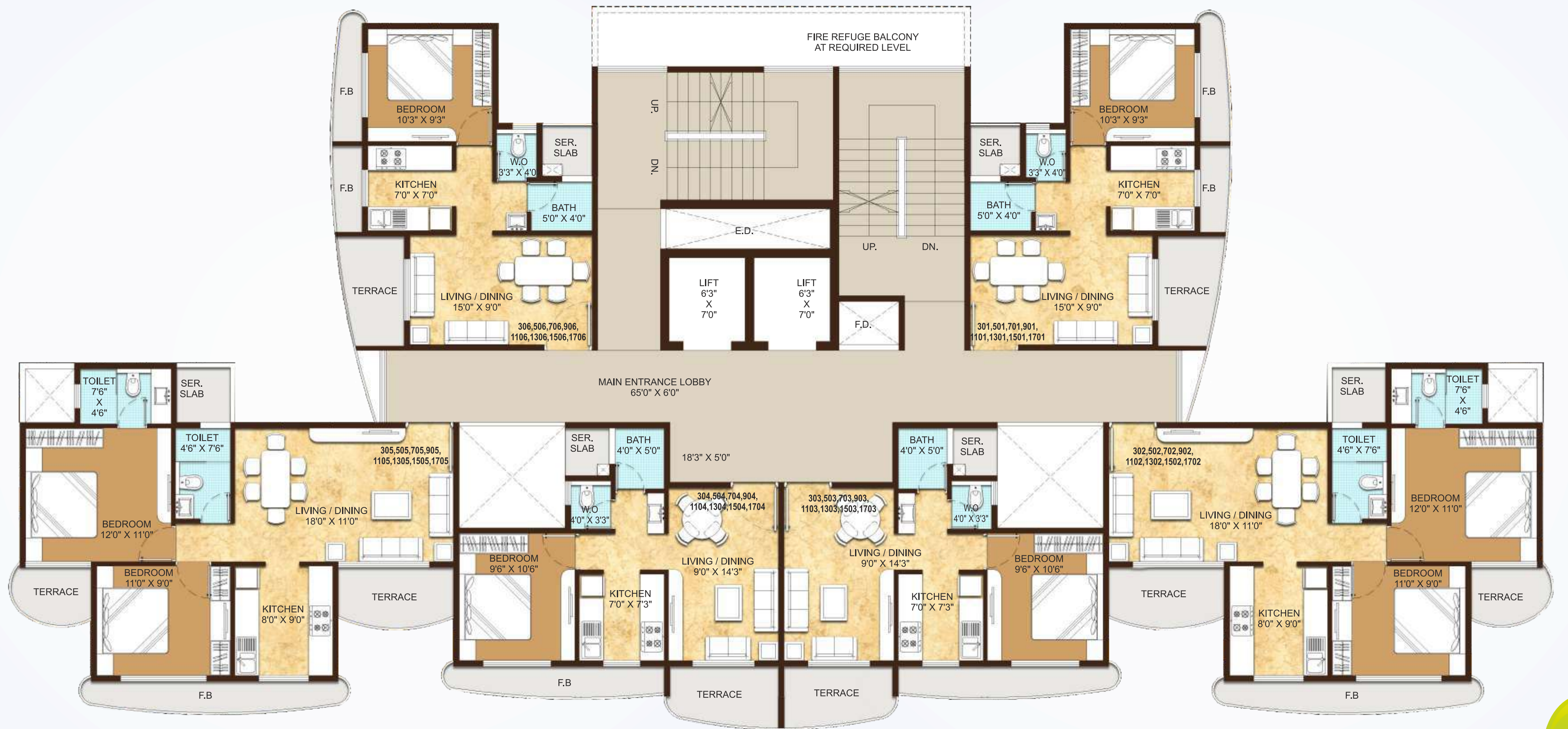
## 2ND FLOOR PODIUM PLAN



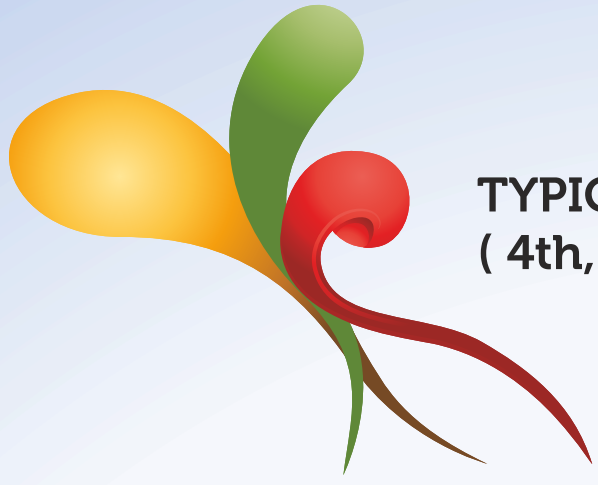




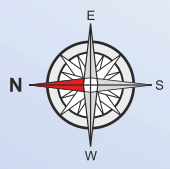
**TYPICAL FLOOR PLAN ODD**  
( 3rd, 5th, 7th, 9th, 11th, 13th, 15th, 17th )







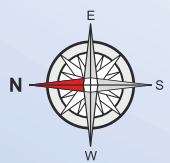
**TYPICAL FLOOR PLAN EVEN**  
**( 4th, 6th, 8th, 10th, 12th, 14th, 16th )**







# TYPICAL 18th FLOOR PLAN







**PARADISE<sup>TM</sup>  
GROUP**

Your World. Our Vision.  
ISO - 9001: 2008 Certified Organization

# Materializing

**RENDERING YOUR  
DREAMS INTO REALITY.**

## **ABOUT THE GROUP**

At Paradise Group we understand your expectations better and our projects are in line with your aspirations. This understanding has helped us design homes to meet your expectations. In the last 20 years of our functioning, we have designed homes that redefined the world of luxury and comfort. By introducing new lifestyles, we have accomplished the goal of happy living through our elegantly designed homes in Navi Mumbai. We welcome you to Paradise group. The builders of happy lives.

